

# Rampion 2 Wind Farm

## Category 6: Environmental Statement

### Volume 3, Chapter 16: Marine archaeology - Figures

**Date: August 2023**

**Revision A**

Document Reference: 6.3.16

Pursuant to: APFP Regulation 5 (2) (a)

Ecodoc number: 004884763-01



## Document revisions

---

Revision	Date	Status/reason for issue	Author	Checked by	Approved by
A	04/08/2023	Final for DCO Application	WSP	RED	RED

---

---

# Contents

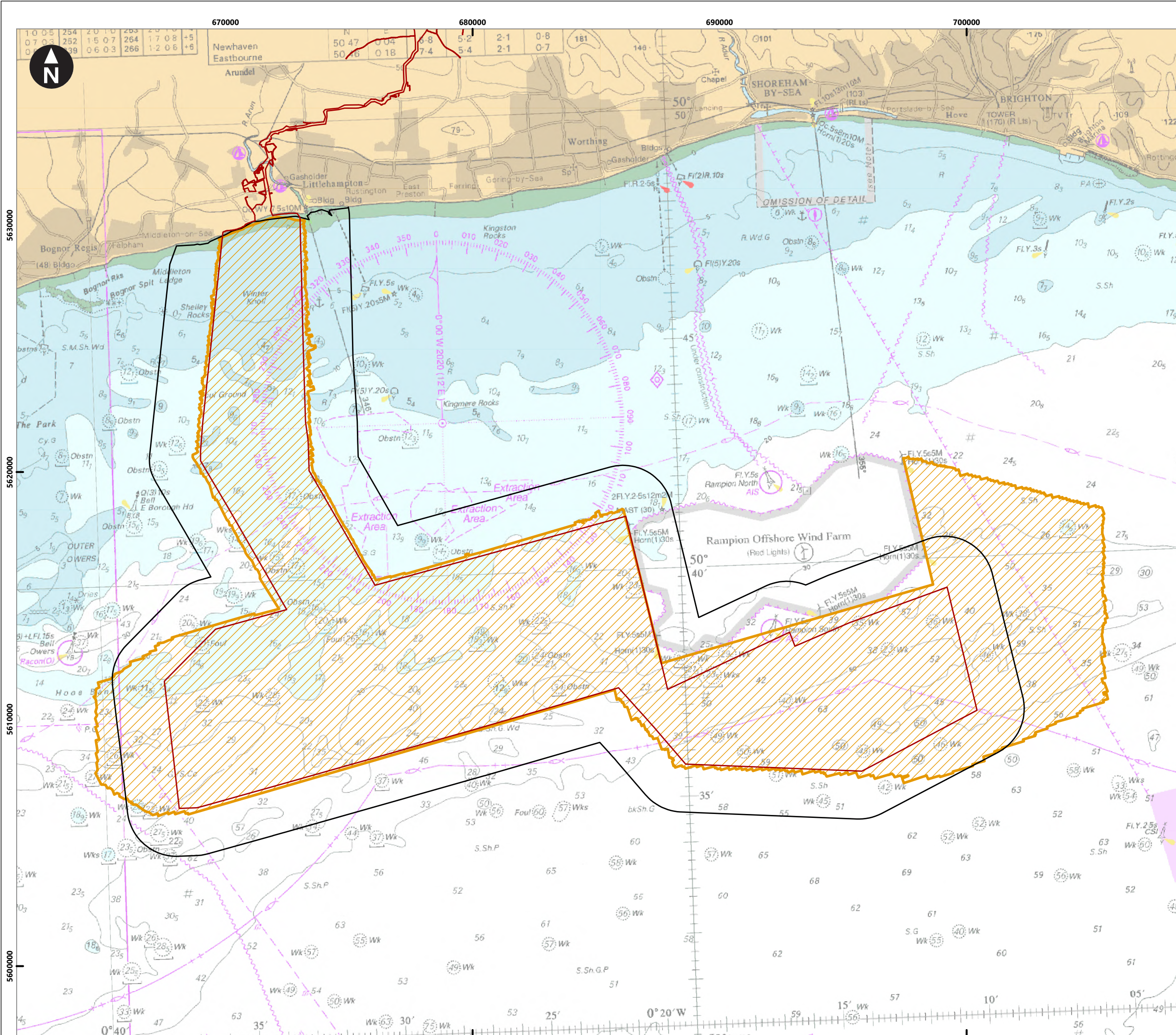
---

## List of Figures

Figure number	Figure Title	APFP number	Ecodoc number	Revision	Revision Date
Figure 16.1	Marine archaeology Study Area and geophysical survey extent	5 (2) (a)	004866284-01	A	04/08/2023
Figure 16.2	Known wrecks and obstructions within the marine archaeology Study Area	5 (2) (a)	004866285-01	A	04/08/2023
Figure 16.3	Archaeological Exclusion Zones recommended for high and medium potential anomalies	5 (2) (a)	004866286-01	A	04/08/2023
Figure 16.4	Valleys and channels of geoarchaeological potential	5 (2) (a)	004866287-01	A	04/08/2023
Figure 16.5	Archaeological Exclusion Zones recommended for recorded wrecks, obstructions and high and medium potential anomalies	5 (2) (a)	004866288-01	A	04/08/2023

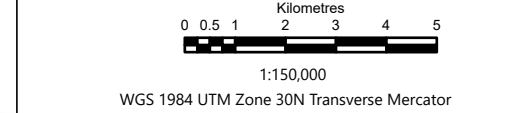
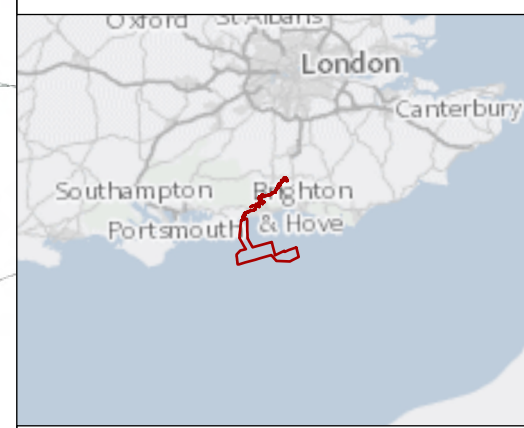
Page intentionally blank





**Key**

- Proposed DCO Order Limits
- Marine archaeology Study Area
- Geophysical survey extent



Rampion Extension Development

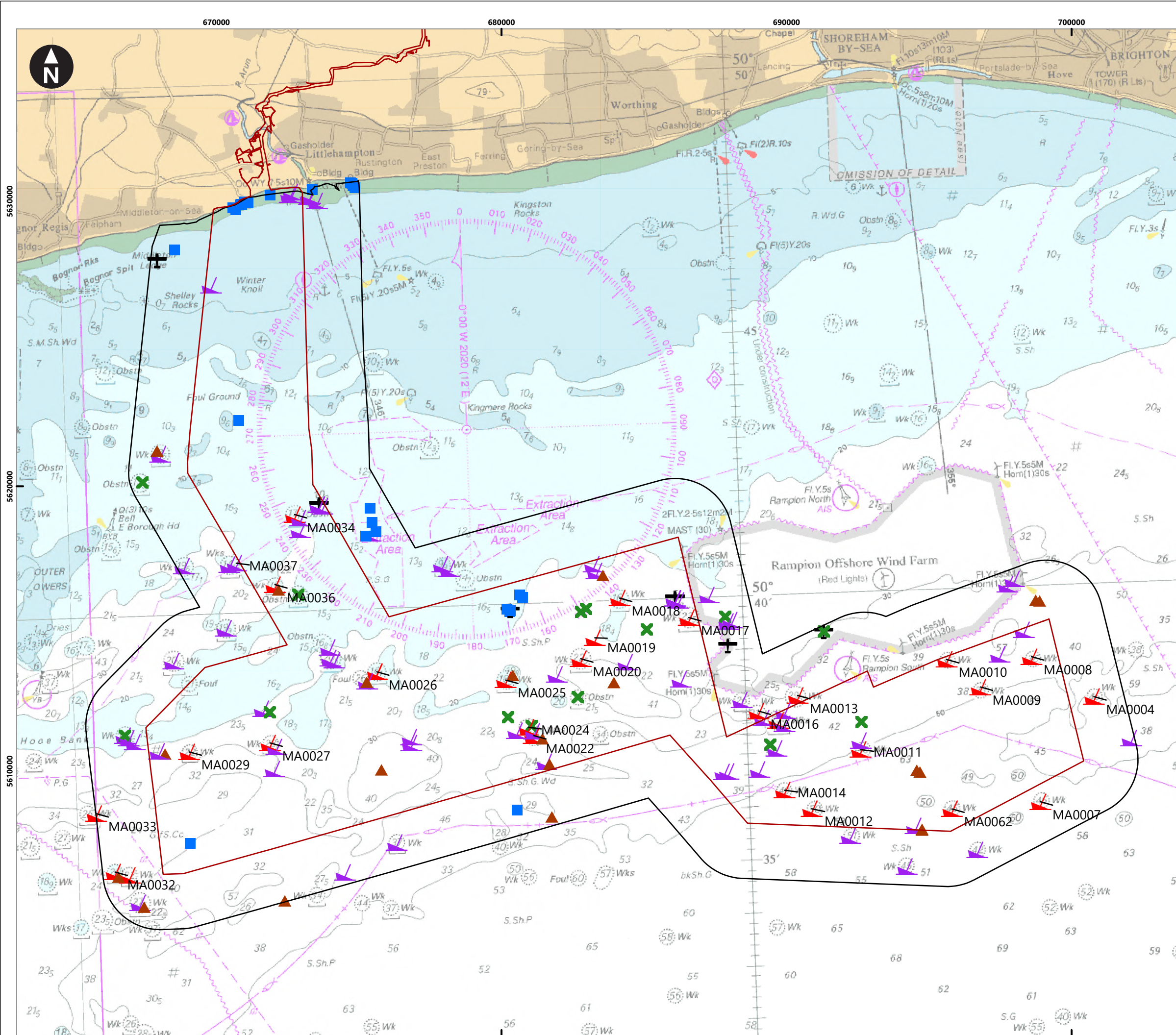
**Rampion 2 Offshore Wind Farm**

Figure 16.1 Marine archaeology Study Area and geophysical survey extent

Environmental Statement

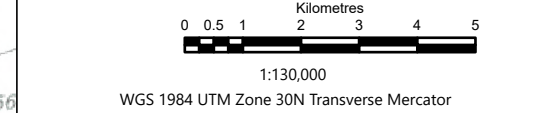
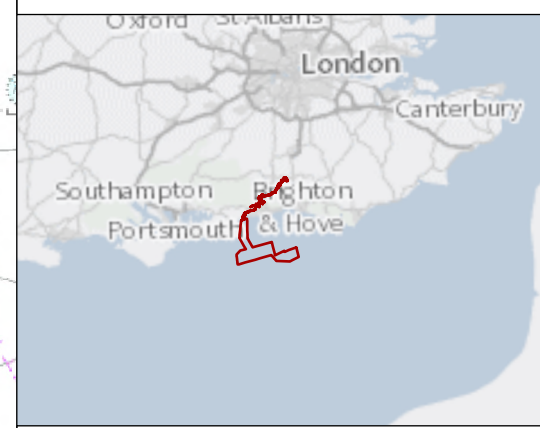
System Identifier:		Version:	
Rampion2		1.0	
Company:	Drawn By:	Chk/Prvrd:	Drawn Date:
MA	HA	CH	07/08/2023
Status:		FINAL	





**Key**

- Proposed DCO Order Limits
- Marine archaeology Study Area
- ✈ Aircraft
- ▲ Fishermen's Fasteners
- Monument/site/find
- ✕ Obstruction
- ▼ Wreck
- ▼ Wreck, seen in geophysical data



Rampion Extension Development



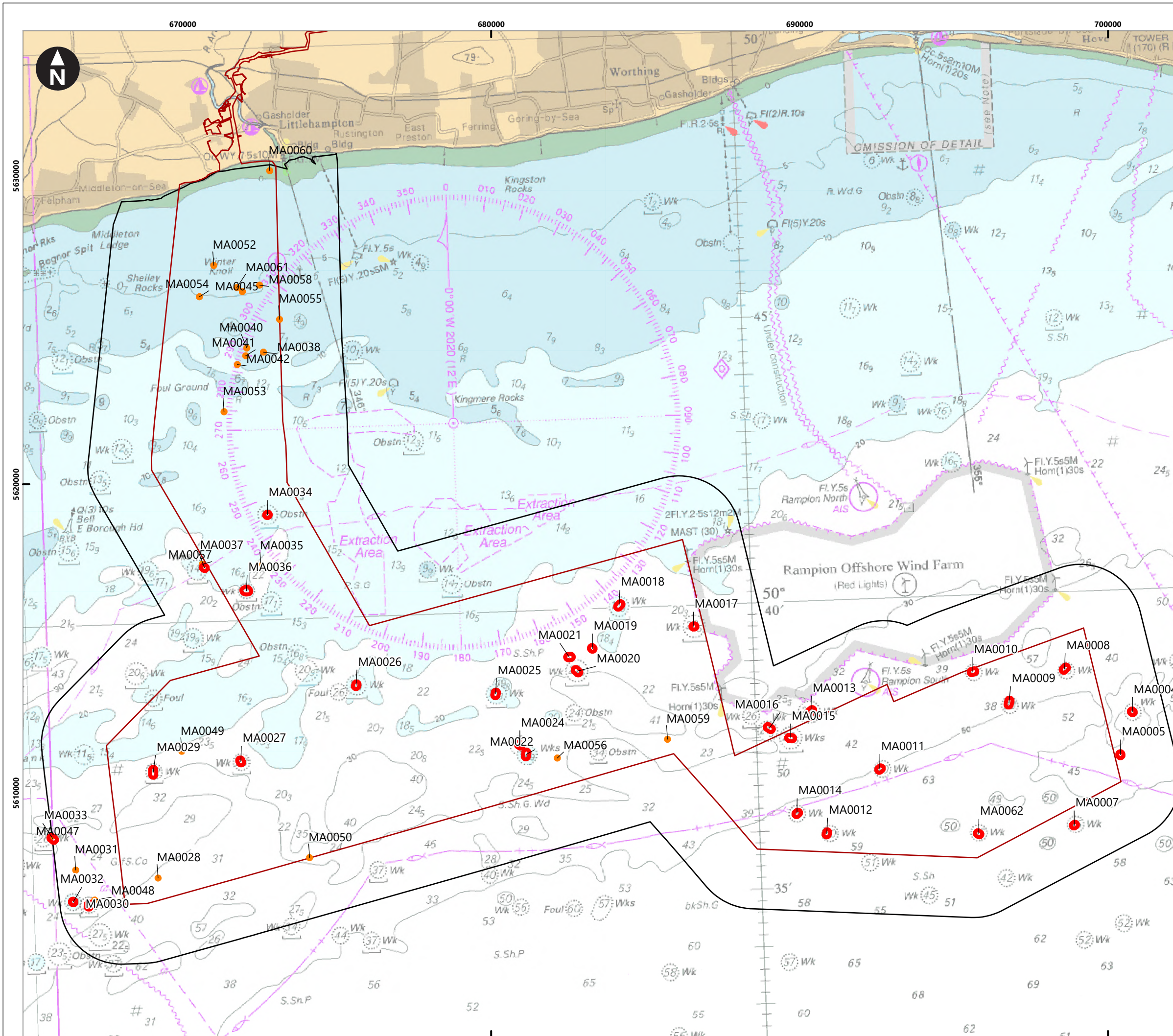
Rampion 2 Offshore Wind Farm

**Figure 16.2 Known wrecks and obstructions within the marine archaeology Study Area**

Environmental Statement

System Identifier:		Version:	
Rampion2		1.0	
Company:	Drawn By:	Chk/Prvrd:	Drawn Date:
MA	HA	CH	07/08/2023
Status:		Status:	
FINAL		FINAL	

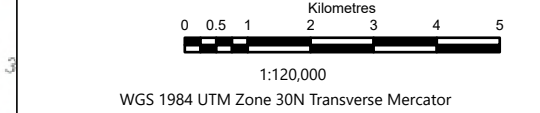
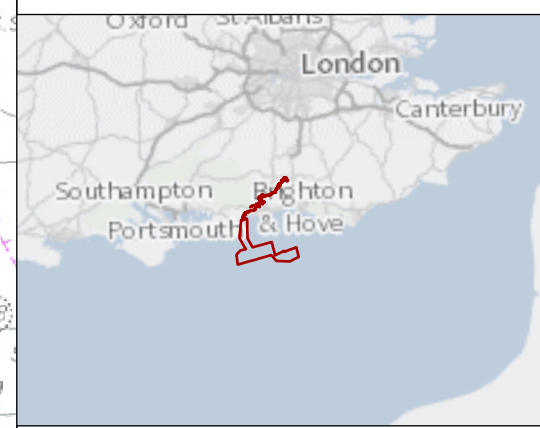




Service Layer Credits: OS Open Background: Contains OS data © Crown Copyright and database right 2020 © British Crown and OceanWise, 2021. All rights reserved. License No. EMS-EK001-727447. Not to be used for Navigation

**Key**

- Proposed DCO Order Limits
- Marine archaeology Study Area
- 100m Archaeological Exclusion Zone
- 50m Archaeological Exclusion Zone



Rampion Extension Development

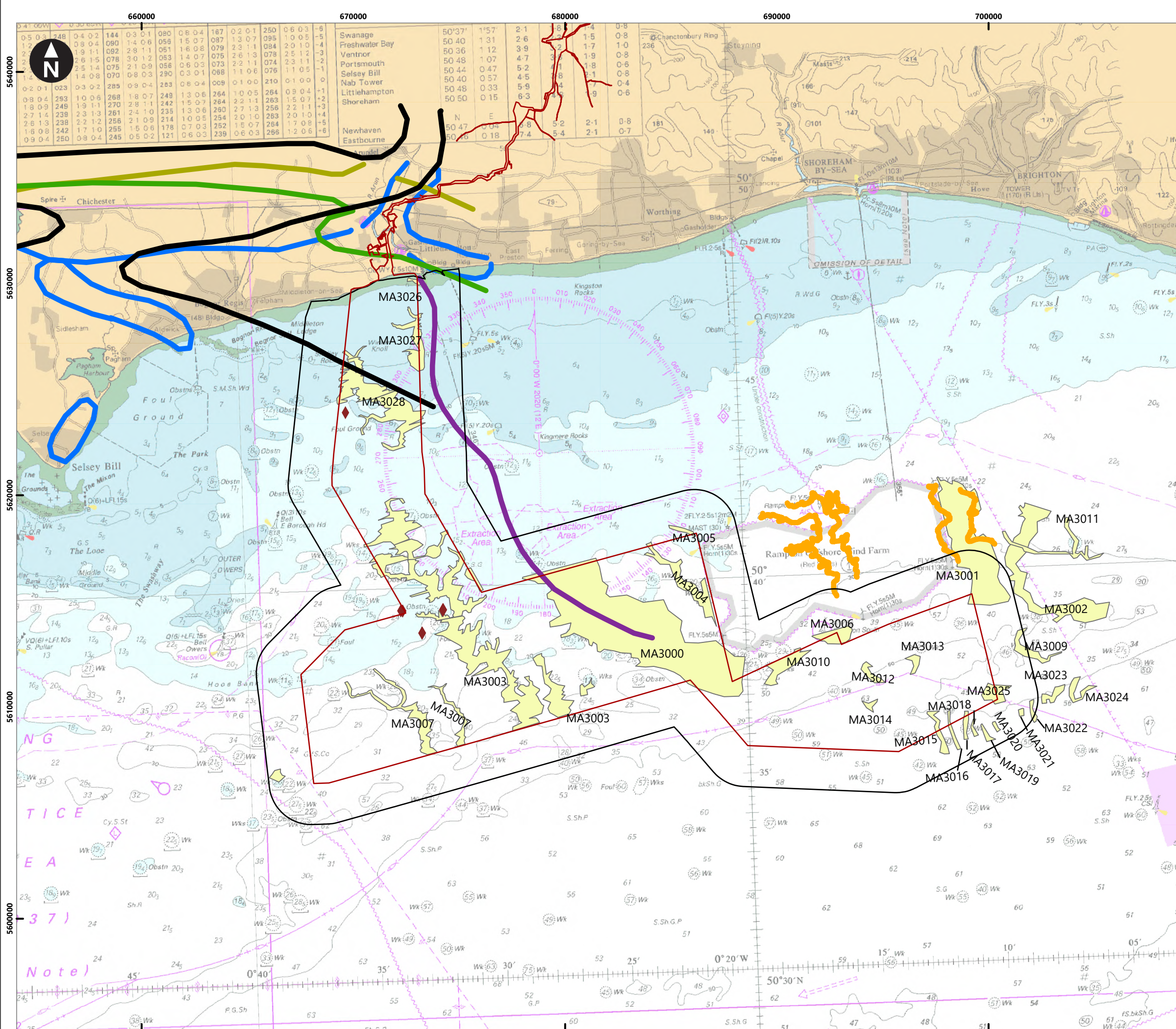
**Rampion 2 Offshore Wind Farm**

Figure 16.3 Archaeological Exclusion Zones recommended for high and medium potential anomalies

Environmental Statement

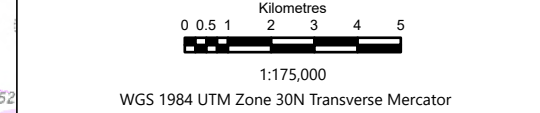
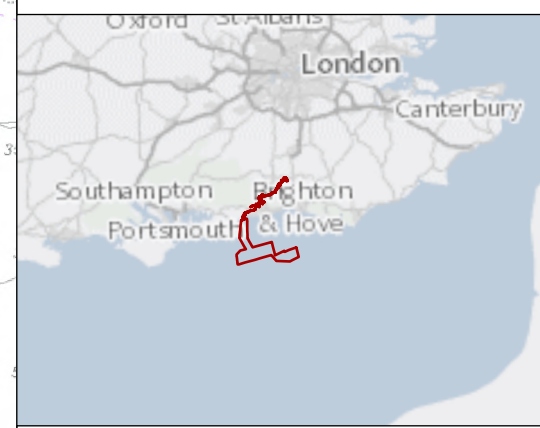
System Identifier:		Version:	
Rampion2		1.0	
Company:	Drawn By:	Chk/Prvrd:	Drawn Date:
MA	HA	CH	07/08/2023
Status:		FINAL	





**Key**

- Proposed DCO Order Limits
- Marine archaeology Study Area
- Rampion 1 palaeochannels
- Goodwin Slindon Raised Beaches
- Submerged Palaeo-Arun valley
- Aldingbourne Raised Beaches
- Brighton Norton Raised Beaches
- Pagham Selsey Raised Beaches
- Rampion2 sub-bottom results
- ◆ HOCl peat and clay exposures

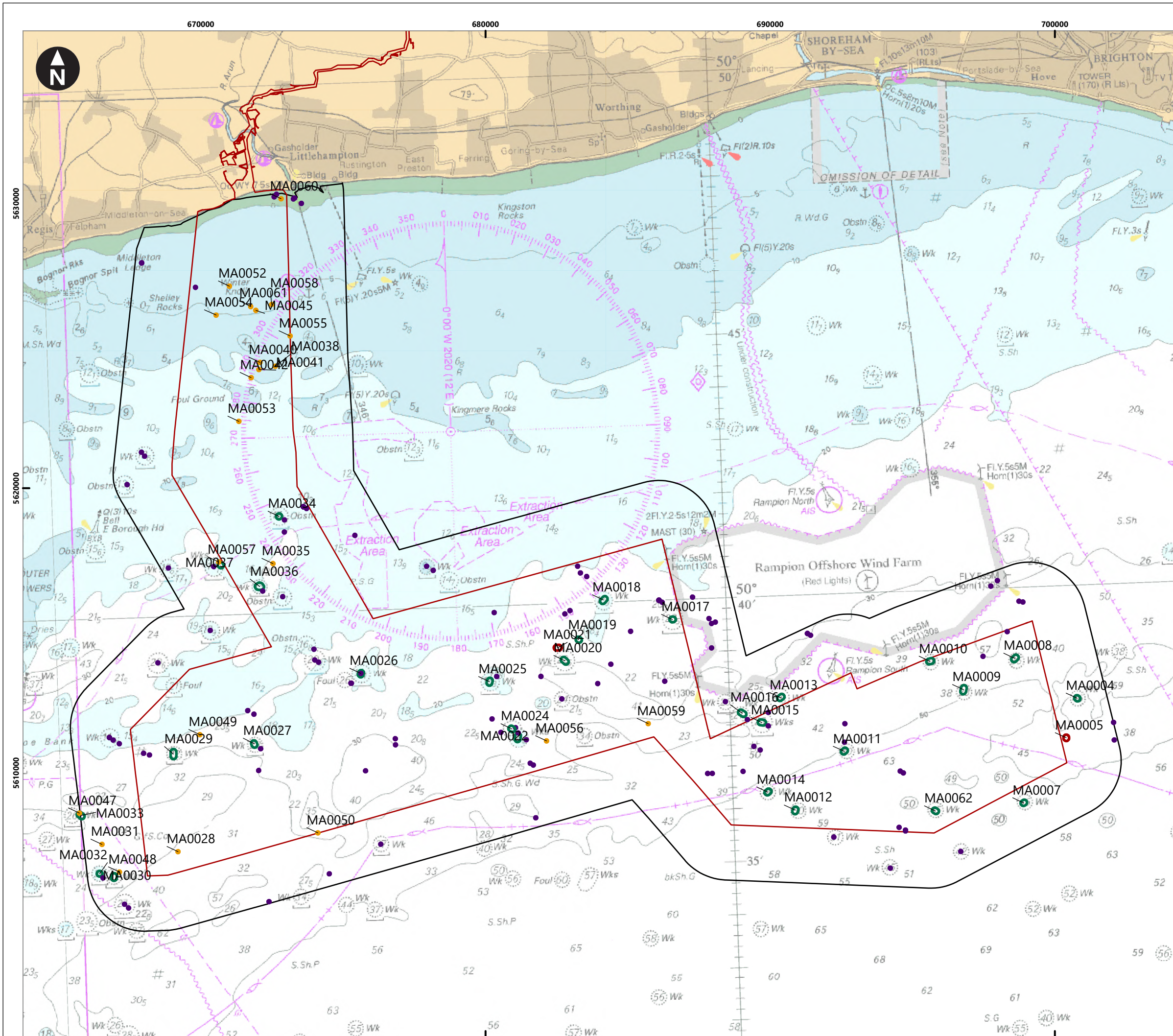


Rampion Extension Development

Rampion 2 Offshore Wind Farm  
 Figure 16.4 Valleys and channels of geoarchaeological potential  
 Environmental Statement

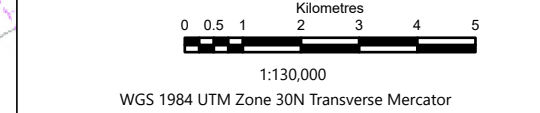
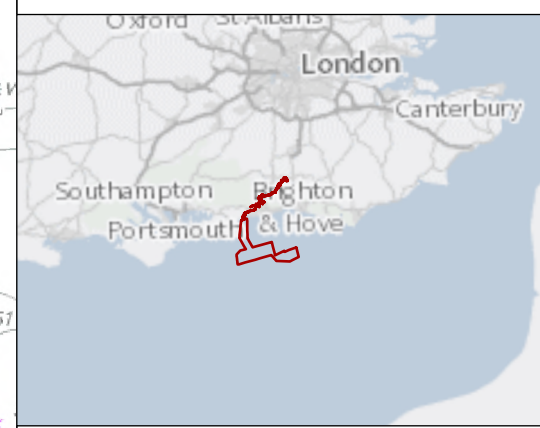
System Identifier: <b>Rampion2</b>		Version: <b>1.0</b>
Company: MA	Drawn By: HA	Chk/Prvrd: CH Drawn Date: 07/08/2023 Status: FINAL





Service Layer Credits: OS Open Background: Contains OS data © Crown Copyright and database right 2020 © British Crown and OceanWise, 2021. All rights reserved. License No. EMS-EK001-727447. Not to be used for Navigation

- Key**
- Proposed DCO Order Limits
  - Marine archaeology Study Area
  - Known wreck or obstruction
  - Known wreck or obstruction seen in geophysical data
  - MA high potential anomalies
  - MA medium potential anomalies



Rampion Extension Development



**Rampion 2 Offshore Wind Farm**  
 Figure 16.5 Archaeological Exclusion Zones recommended for recorded wrecks, obstructions, and high and medium potential anomalies

Environmental Statement

System Identifier:		Version:	
Rampion2		1.0	
Company:	Drawn By:	Chk/Prvrd:	Drawn Date:
MA	HA	CH	07/08/2023
Status:		FINAL	